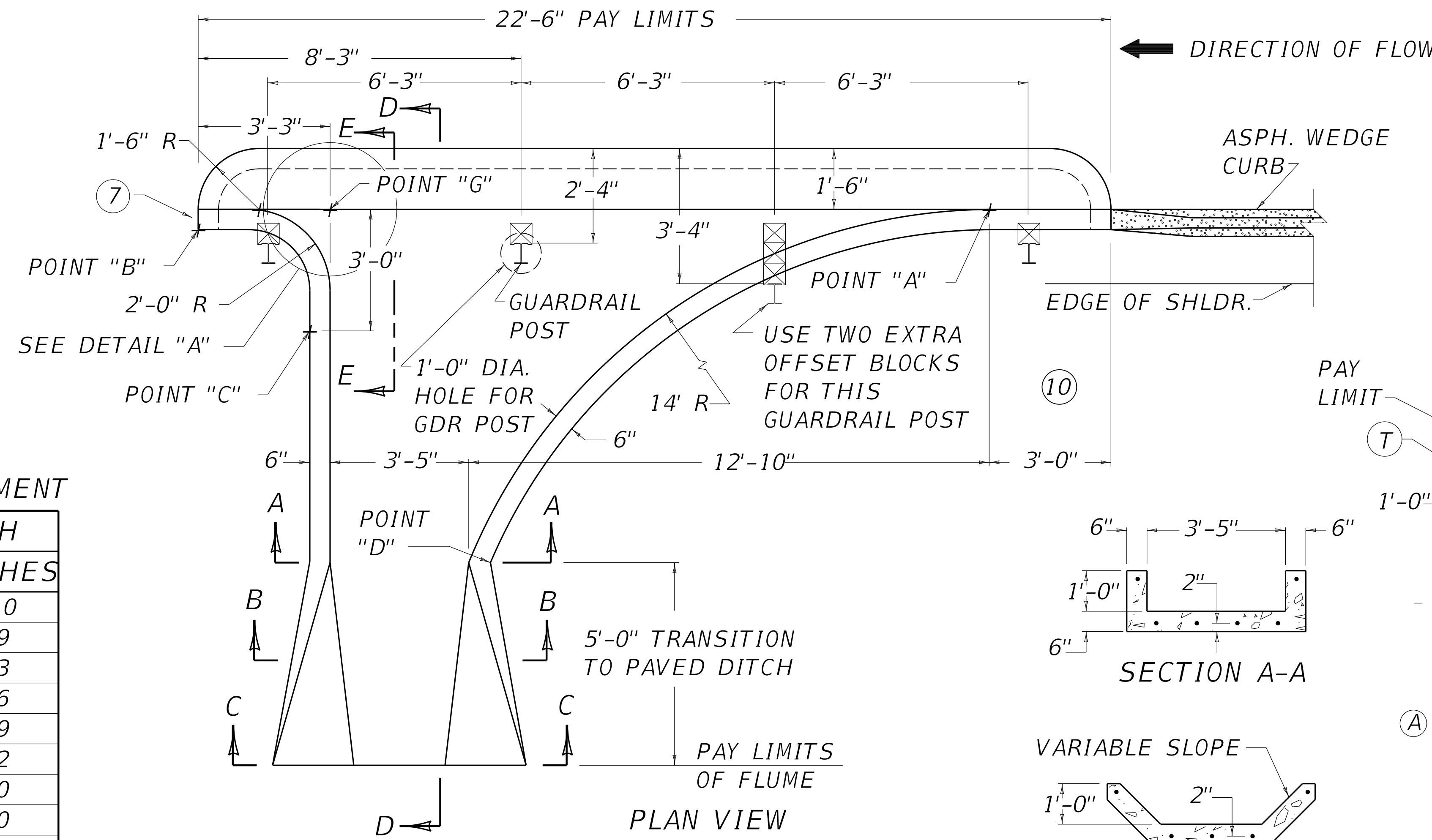


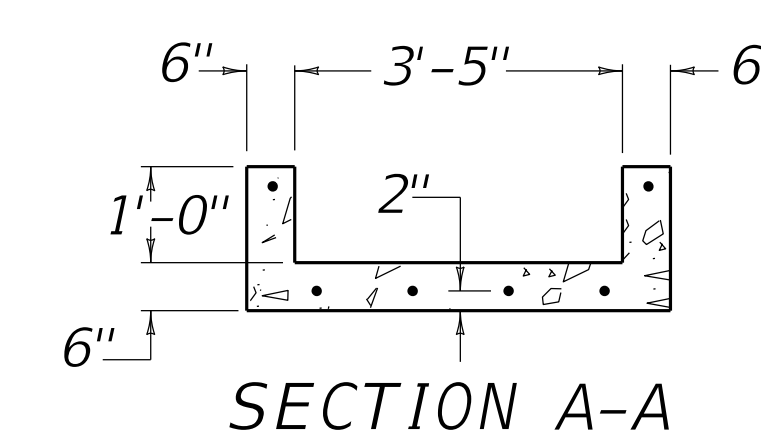
BILL OF REINFORCEMENT

MARK	QTY.	LENGTH	
		FEET	INCHES
A	2	1	10
B	5	2	9
C	1	3	3
D	4	15	6
E	1	9	9
F	1	8	2
G	1	7	0
H	1	6	0
J	1	5	0
K	1	4	6
L	1	4	0
M	1	3	8
N	1	3	5
O	1	3	0
P	1	2	10
Q	1	24	5
R	1	15	7
AA	2	19	7
BB	1	22	0
CC	1	14	2
DD	1	10	6
EE	1	8	6
FF	1	7	2
GG	1	6	3
HH	1	5	5
JJ	1	4	9
KK	1	4	0
LL	1	4	0
MM	1	4	2
NN	1	4	6
OO	1	4	10
PP	1	5	0
T	5	2	0

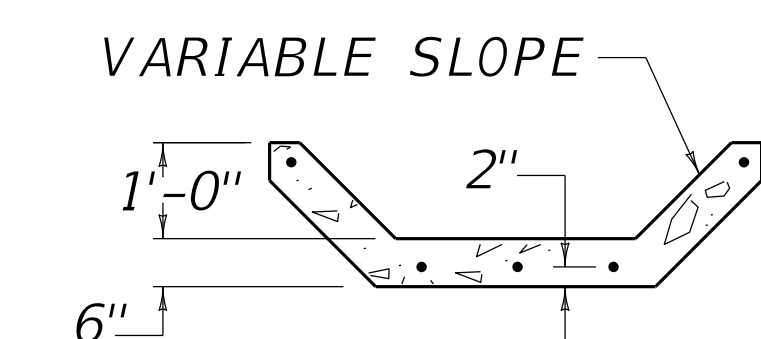


~ NOTES ~

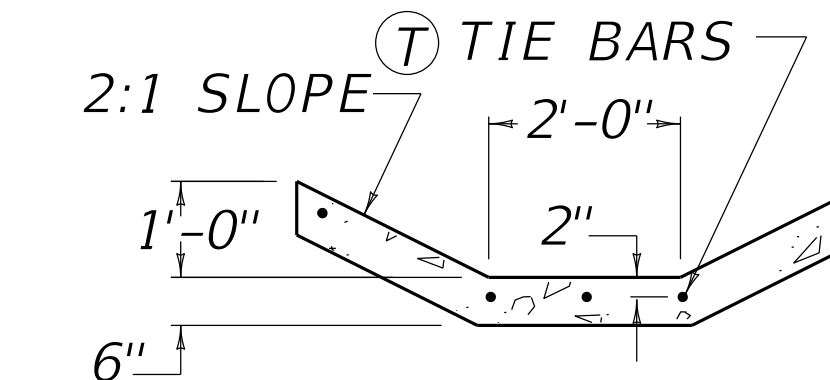
- BID ITEM AND UNIT TO BID
FLUME INLET TYPE 2 EACH
- ALL REINFORCEMENT SHALL BE NO. 4 BARS SPACED 1'-0" O.C.
 - QUANTITIES WERE CALCULATED FOR APPLICATION ON A 2:1 FILL SLOPE. IT MAY BE NECESSARY TO ADJUST THE STEEL IN THE FIELD FOR APPLICATION OTHER THAN 2:1 SLOPE.
 - THE FLOW LINE OF THE FLUME AND THE NORMAL PAVED DITCH FROM POINT "G" ON THE FLUME TO THE LOWER END OF THE NORMAL PAVED DITCH SHALL BE A STRAIGHT LINE GRADE.
 - TRANSITION 6" HIGH CURB FROM POINT "B" TO 1'-0" HIGH CURB AT POINT "C" AND FROM POINT "A" TO 1'-0" HIGH CURB AT POINT "D".
 - WHEN A FLUME IS LAST ON A DOWN GRADE, SHORT RADIUS BETWEEN POINTS "B" AND "C" IS NOT NECESSARY. SIDE WALL CAN BE EXTENDED STRAIGHT AND TRANSITIONED FROM 1'-0" AT POINT "C" TO 1/2" HIGH AT POINT "G". SEE DETAIL "A"
 - WHEN FLUME IS SHORTENED AS DETAIL "A", STEEL REINFORCEMENT BARS A AND B DECREASED ONE BAR EACH. SHORTEN BAR AA TO 18'-3", BAR BB TO 19'-3", AND BAR CC TO 13'-6".
 - IF CURB IS CONTINUED USE 2'-0" TRANSITION TO ADJACENT CURB.
 - USE 37'-6" GUARDRAIL STEEL W BEAM-S FACE (NESTED) ACROSS FLUME OPENING.
 - CONCRETE, REINFORCEMENT, EXCAVATION AND EXTRA GUARDRAIL (NESTED RAIL) SHALL BE INCIDENTAL TO UNIT BID PRICE.
 - TRANSITION FROM ADJACENT CURB TO 6" AT POINT "A".



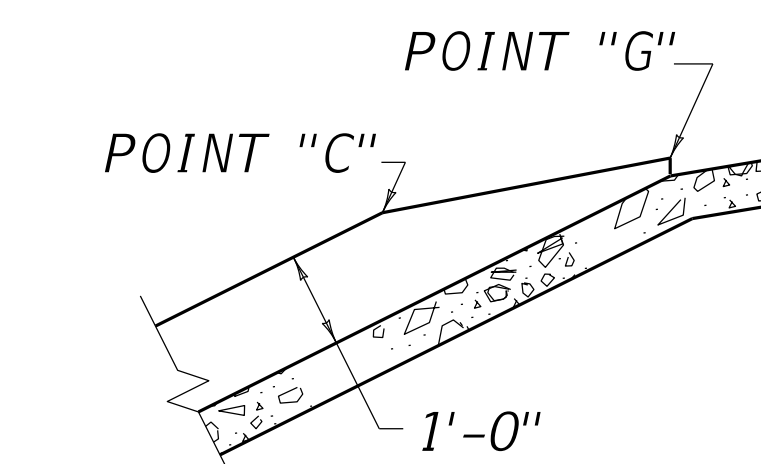
SECTION A-A



SECTION B-B

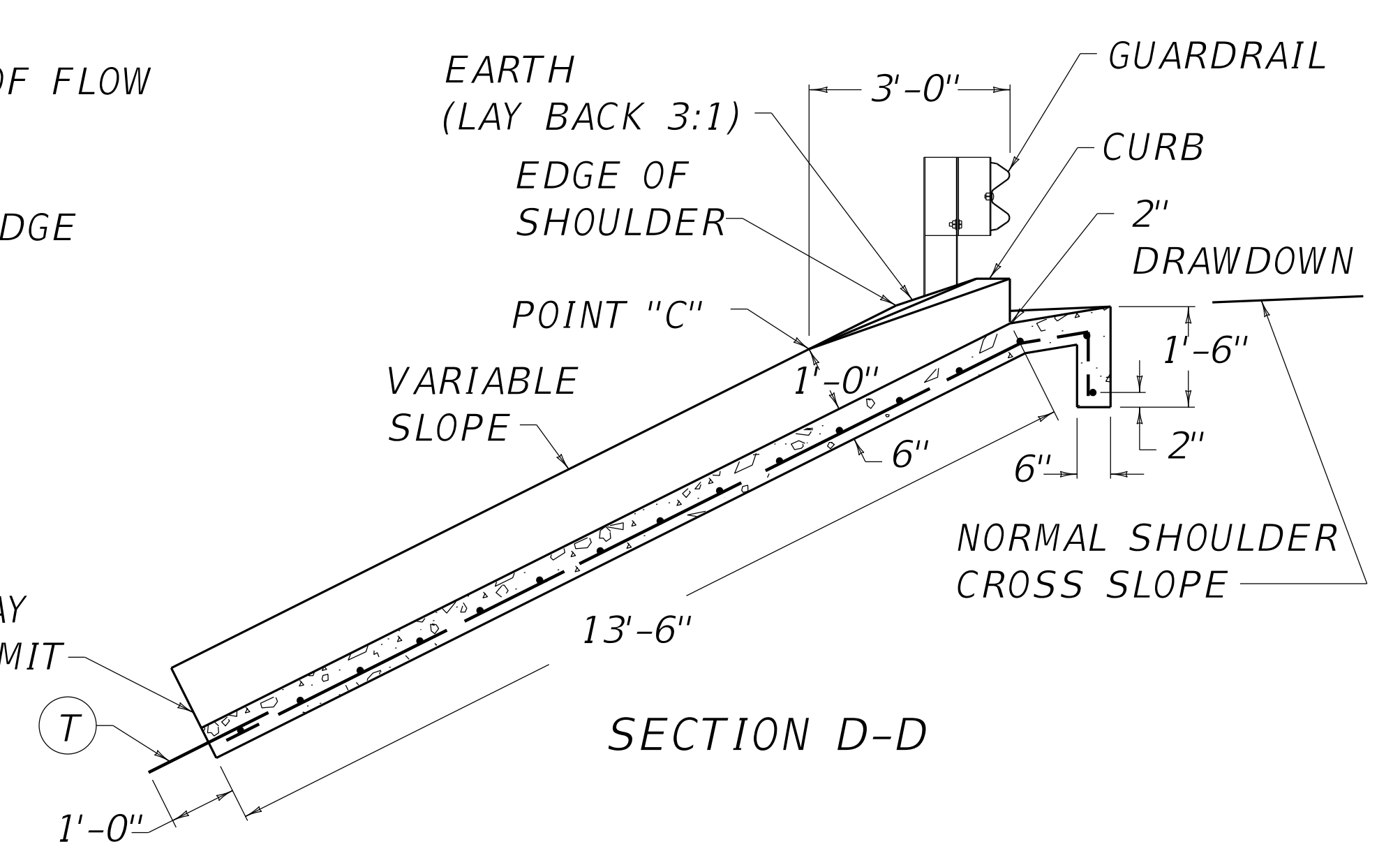


SECTION C-C

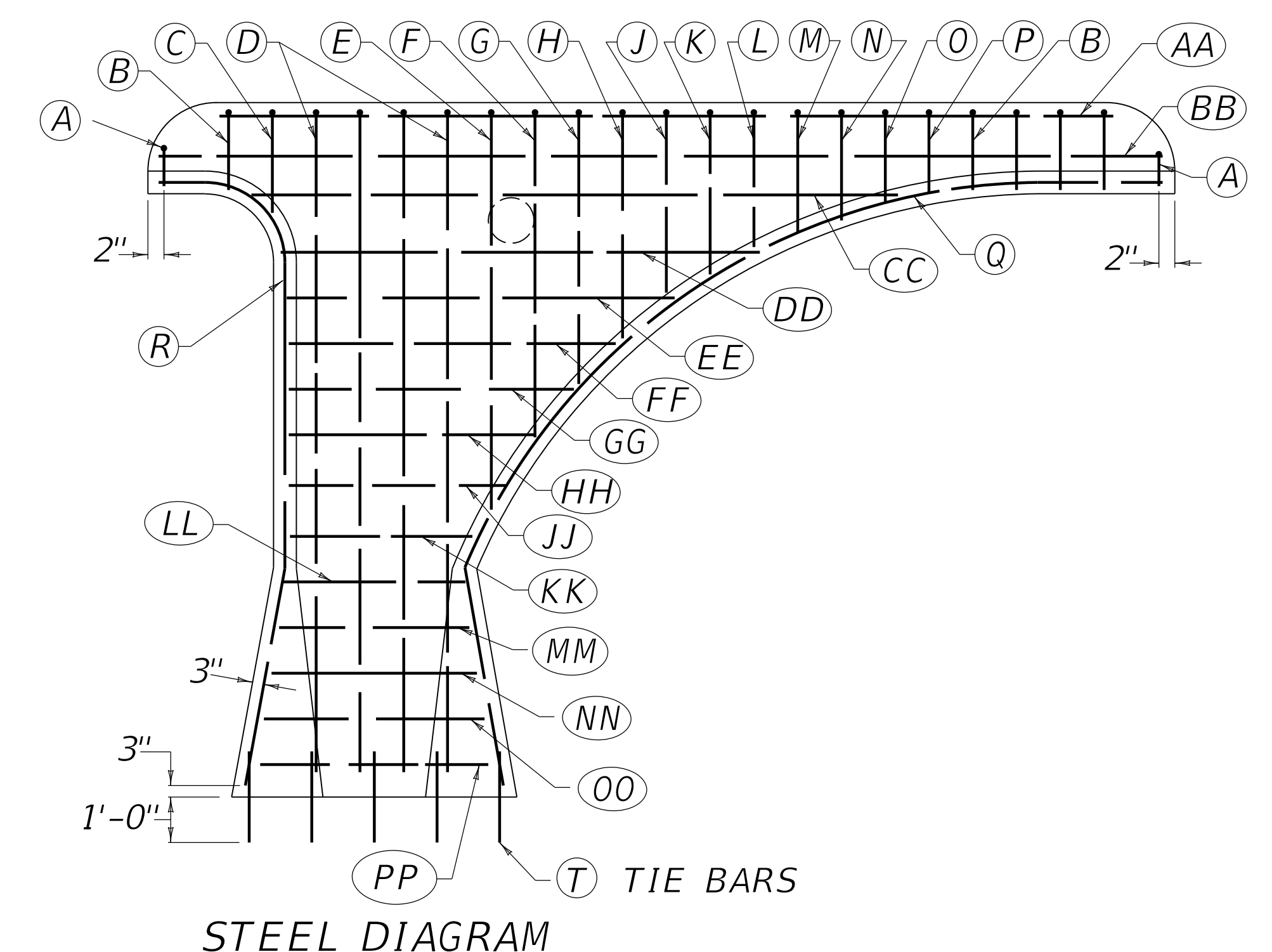


SECTION E-E

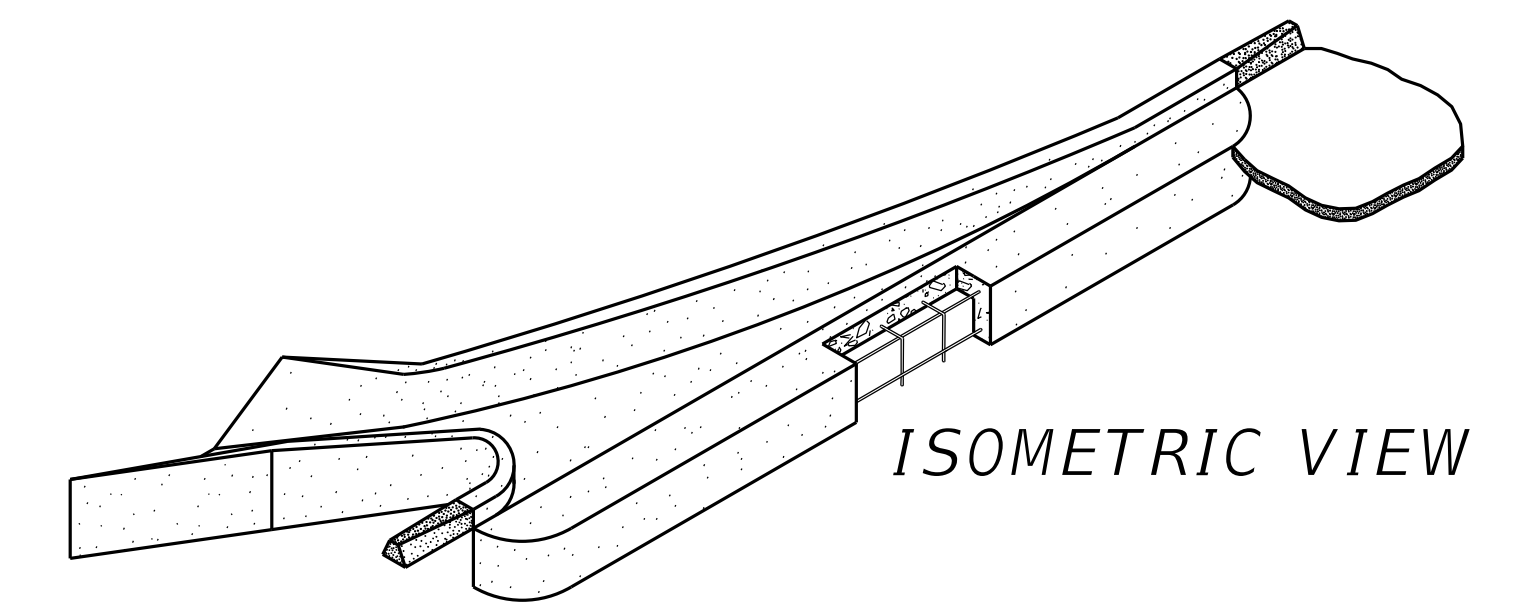
APPROX. QUANTITIES	
CLASS "A" CONC.	3.7 CU. YDS.
STEEL REINF.	225 LBS.



SECTION D-D



STEEL DIAGRAM



ISOMETRIC VIEW